



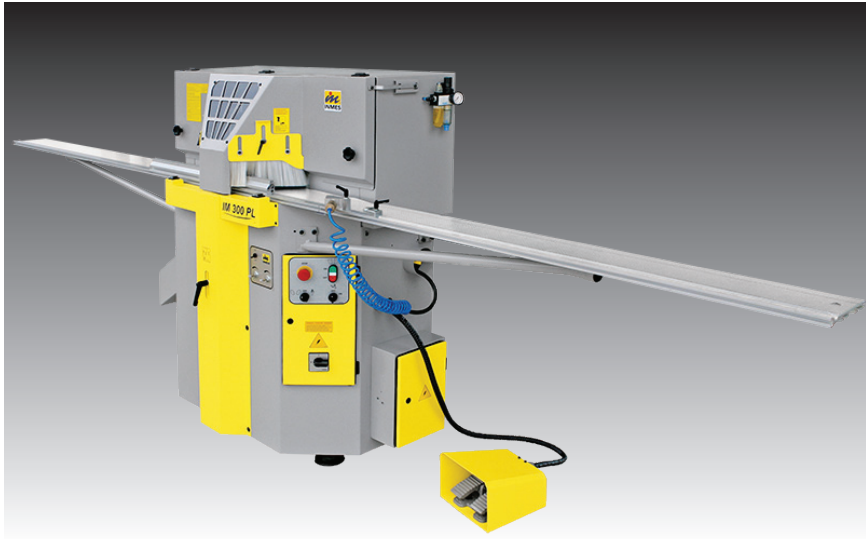
The Inmes IM-300PL is a great value double-mitre saw, engineered for picture framing offering the desired combination of high quality cuts, minimal wastage and fast operation.



LARSON · JUHL®



Inmes IM-300PL Double Mitre Saw



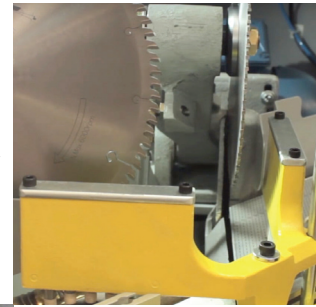
The **Inmes IM-300PL** cuts with precision providing a perfect 45 degree mitered piece - in both wide and narrow profiles.

Each 300mm (12inch) diameter blade is mounted on a cast, machined arm, counterbalanced by the motor. The pivot point is located to allow the widest possible cut from the blades.

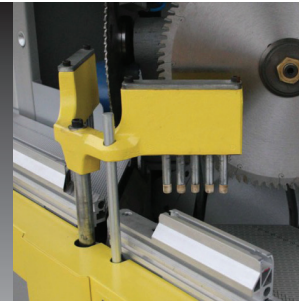
The blades travel through a slight arc to enter the back edge of the moulding, which helps reduce chipping.

- Cuts mouldings up to 142mm wide, max height 80mm.
- Swing arm movement delivers faster cycling speeds from smaller air cylinders due to the low weight of the arms.
- Blade arms can be operated independently via twin foot pedal to minimise centre off-cut wastage, or together for faster cycle times.
- Adjustable blade descent speed to optimise cut quality for wide or delicate mouldings.
- Integrated dust extraction unit included.
- Self-adjustable vertical pneumatic moulding clamp system.
- 1900mm calibrated right-hand support arm with a sliding moulding flip-stop. Optional extra 1.0m extension available.
- 1900mm left-hand moulding support arm also included.
- Fitted with conveniently located side-exit chip chute.
- Supplied with Leuco 300mm low-noise, low-vibration blades for wood mouldings.
- Electronic blades braking system for extra safety.

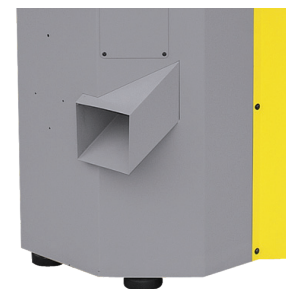
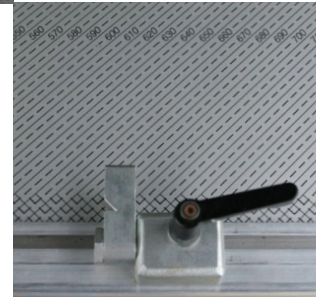
Independent or Dual Blade Stroke for Wastage Control or Production Speed.



Self-Adjustable Vertical Pneumatic Clamping System



1900mm Arms with Direct Measuring Scale & Sliding Flip-Stop



Conveniently Located Side-Exit Chip Chute

Integrated Dust Extractor Included



LARSON · JUHL®

• web www.larsonjuhl.com.au • email techsupport@larsonjuhl.com.au
• customer service +61 7 3863 8400

Inmes IM300PL Saw Specifications:	
Machine Body Width	1235mm
Machine Depth	670mm
Machine Height	1320mm
Table Height	900mm
Machine Weight	255kg
Blade Diameter	300mm
Max Cut Width	142mm
Max Cut Height	80mm
Power Requirements	32A Single Phase
Pressure Requirements	6 Bar
Peak Operating Noise	90dB
Saw Motors	2 x Weg 1.5hp